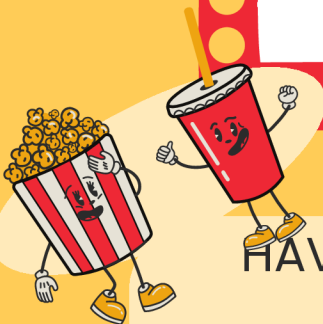


SERIES REVIEW GUIDELINES



HAVE A FAVORITE SERIES YOU WANT TO SHARE?
TELL US ABOUT IT!

DEER PARK TEENS IN GRADES 6-12 CAN EARN 3 HOURS OF COMMUNITY SERVICE FOR A SERIES REVIEW THAT COMPLETED AND ACCEPTED. SERIES MUST BE APPROPRIATE FOR TEENS AND CHILDREN AND COMPLETE.

TEENS CAN ONLY SUBMIT 1 SERIES REVIEW PER MONTH.

REMEMBER, OTHER TEENS WILL BE READING YOUR REVIEW! YOUR REVIEW NEEDS TO BE CLEAR, CONCISE, COMPLETELY YOUR OWN WORK, AND FOLLOW THE GUIDELINES, OR IT WILL BE SENT BACK FOR EDITS BEFORE HOURS CAN BE AWARDED.

If you submit a plagiarized review or a review containing AI generated content, you will not get credit for the review.

All reviews will be run through a plagiarism/AI checker.



SERIES REVIEW GUIDELINES

YOUR REVIEW MUST CONTAIN:

- REVIEWS MUST BE AT LEAST ONE PAGE LONG, 300 WORDS OR MORE, AND SIZE 12 FONT.
- TITLE
- GENRE
- NUMBER OF SEASONS
- NUMBER OF EPISODES IN A SEASON
- HOW LONG THE EPISODES USUALLY ARE
- AGE RATING (SERIES REVIEWED MUST BE BETWEEN G THROUGH PG-13)
 - **SERIES MUST BE TEEN AND KID FRIENDLY**
- WHERE TO WATCH IT (WHICH STREAMING SERVICE, ETC)



SERIES REVIEW GUIDELINES

YOUR REVIEW MUST CONTAIN (CONT.):

- CHARACTERS: LIST 3-5 CHARACTERS AND EXPLAIN WHO THE CHARACTERS ARE AND THEIR ROLE IN THE STORY.
- SUMMARY OF THE STORY. **BE SPECIFIC.** AVOID SPOILERS.
- YOUR REVIEW OF THE SERIES: **BE SPECIFIC ABOUT WHAT YOU LIKED OR DIDN'T LIKE.** WHAT DID YOU THINK OF THE SERIES? DID YOU LIKE IT?
- YOUR FAVORITE QUOTE FROM THE SERIES WITH THE NAME OF THE CHARACTER THAT SAID IT AND THE EPISODE NUMBER/TITLE IT IS IN. WHY IS THIS YOUR FAVORITE QUOTE?
- RATE THE SERIES 1-5. 1 IS THE LOWEST, 5 IS THE HIGHEST.



SERIES REVIEW GUIDELINES

ONCE COMPLETE, PLEASE SEND REVIEWS TO TEENSERVICES@DEERPARKLIBRARY.ORG ALONG WITH YOUR NAME, GRADE AND LIBRARY CARD NUMBER. PLEASE DO NOT USE YOUR SCHOOL EMAIL WHEN SENDING IN YOUR BOOK REVIEWS AS I WILL NOT BE ABLE TO SEND YOUR CERTIFICATE TO THAT EMAIL.

IF YOU HAVE A YAHOO EMAIL ADDRESS, PLEASE CHECK YOUR SPAM FOLDER! FOR SOME REASON, EMAILS SENT FROM THE LIBRARY ARE MARKED AS SPAM BY YAHOO.

PLEASE ALLOW UP TO TWO WEEKS FOR A RESPONSE TO YOUR REVIEW.

COMMUNITY SERVICE HOURS WILL NOT BE AWARDED THE DAY A REVIEW IS SUBMITTED AS I NEED TIME TO READ AND EVALUATE YOUR REVIEW. PLEASE SUBMIT YOUR REVIEWS AS EARLY AS YOU CAN IF YOU NEED COMMUNITY SERVICE HOURS FOR A CERTAIN DATE. THIS WILL ALSO GIVE YOU TIME TO REVISE YOUR REVIEW, IF IT NEEDS REVISION.



SERIES REVIEW GUIDELINES

PLEASE USE THE FOLLOWING FORMAT FOR YOUR REVIEW

TITLE:

GENRE:

NUMBER OF SEASONS:

NUMBER OF EPISODES IN A SEASON:

HOW LONG THE EPISODES USUALLY ARE :

AGE RATING:

WHERE TO WATCH IT:

CHARACTERS: (AND EXPLAIN WHO THEY ARE)

- CHARACTER 1
- CHARACTER 2
- CHARACTER 3
- CHARACTER 4
- CHARACTER 5

SUMMARY OF THE STORY :

REVIEW:

FAVORITE QUOTE:

RATING:

